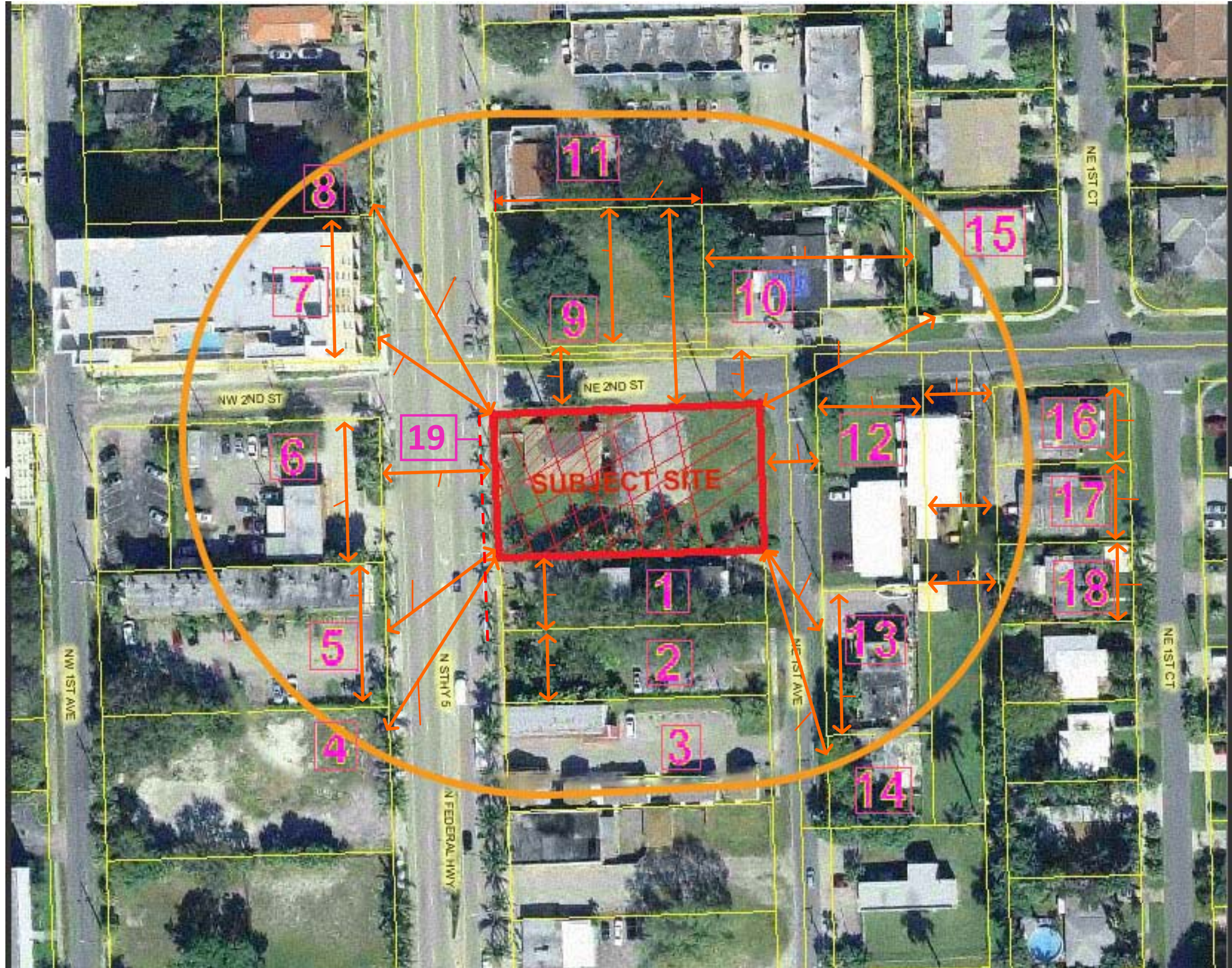


PROPOSED HOTEL REFERENCE AERIAL SHOWING VICINITY WITHIN 200 FEET OF SITE PROPERTY



Properties information:

Jimmie's Chocolate (Restaurant)

- a. 2 stories
- b. Zoning Code: CC = Transit Oriented Development
- c. Use Code: 11 = Commercial – Stores, 1 story
- d. County Land Use: 100 = Regional Activity Center

Vacant Land

- a. Zoning Code: CC = Transit Oriented Development
- b. Use Code: 28 = Commercial – Parking Lots (commercial or patron), mobile home parks
- c. County Land Use: 100 = Regional Activity Center

Sunset Motel

- a. Zoning Code: CC = Transit Oriented Development
- b. Use Code: 39 = Commercial – Hotels, Motels
- c. County Land Use: 100 = Regional Activity Center

Vacant Land

- a. Zoning Code: CC = Transit Oriented Development
- b. Use Code: 10 = Commercial – Vacant Commercial
- c. County Land Use: 100 = Regional Activity Center

F&P Apartments

- a. 2 stories
- b. Zoning Code: CC = Transit Oriented Development
- c. Use Code: 03 = Residential – Multi-family – 10 units or more
- d. County Land Use: 100 = Regional Activity Center

Francisco's auto Repairs

- a. 1 Story
- b. Zoning Code: CC = Transit Oriented Development
- c. Use Code: 27 = Commercial – Auto sales, repair and storage, auto-service shops, body and fender shops, commercial garages....
- d. County Land Use: 100 = Regional Activity Center

Holiday Inn Express

- a. 7 stories
- b. Zoning Code: CC = Transit Oriented Development
- c. Use Code: 39 = Commercial – Hotels, motels
- d. County Land Use: 100 = Regional Activity Center

Law Offices

- a. 1 Story
- b. Zoning Code: CC = Transit Oriented Development
- c. Use Code: 17 = Commercial – Office buildings, non-professional services buildings, one-story
- d. County Land Use: 100 = Regional Activity Center

Vacant Land

- a. Zoning Code: CC = Transit Oriented Development
- b. Use Code: 10 = Commercial – Commercial – Vacant land
- c. County Land Use: 100 = Regional Activity Center

Ware House

- a. 1 story
- b. Zoning Code: CC = Transit Oriented Development
- c. Use Code: 48 = Industrial – Warehousing, distribution terminals, trucking terminals, van & storage warehousing
- d. County Land Use: 100 = Regional Activity Center

Victoria Originale (Store/Restaurant)

- a. 1 Story
- b. Zoning Code: CC = Transit Oriented Development
- c. Use Code: 11 = Commercial – Stores, 1 story
- d. County Land Use: 100 = Regional Activity Center

Residential Units (Multi)

- a. 1 story & 2 stories bldgs. (2 bldgs)
- b. Zoning Code: CC = Transit Oriented Development
- c. Use Code: 08 = Residential – Multi-family – less than 10 units
- d. County Land Use: 100 = Regional Activity Center

Residential Units (Multi) – Looks more like 2 stories house

- a. 2 stories
- b. Zoning Code: CC = Transit Oriented Development
- c. Use Code: 08 = Residential – Multi-family – less than 10 units
- d. County Land Use: 100 = Regional Activity Center

House (Residence)

- a. 1 Story
- b. Zoning Code: CC = Transit Oriented Development
- c. Use Code: 01 = Residential – Single Family
- d. County Land Use: 100 = Regional Activity Center

House (Residence)

- a. 1 Story
- b. Zoning Code: NBHD-RES = Residential
- c. Use Code: 08 = Residential – Multi-family –less than 10 units
- d. County Land Use: 100 = Regional Activity Center

Residential Units (Multi)

- a. 1 Story
- b. Zoning Code: NBHD-RES = Residential
- c. Use Code: 08 = Residential – Multi-family –less than 10 units
- d. County Land Use: 100 = Regional Activity Center

Residential Units (Multi)

- a. 1 Story
- b. Zoning Code: NBHD-RES = Residential
- c. Use Code: 08 = Residential – Multi-family –less than 10 units
- d. County Land Use: 100 = Regional Activity Center

House (Residence)

- a. 1 Story
- b. Zoning Code: NBHD-RES = Residential
- c. Use Code: 01 = Residential – Single Family
- d. County Land Use: 100 = Regional Activity Center

There seems to be a Bike Lane by the subject property, although it does not have any proper or clear Bike Lane designation or markings.

- a. There is no Bus stop, bus stop bench or Bus shelter by the subject property
- b. Main public transit rout by the subject property is Federal Highway.